



NİDAPARK
— ÇENGELKÖY —

PLEASE SCAN THE QR CODE FOR THE DIGITAL CATALOGUE.



*With the scenic blue of Istanbul and the sounds of fluttering wings...
Streets redolent of bagels, sincerity and a cozy neighborhood life...
And centuries old trees inshelling history...*

ÇENGELKÖY IS FULL OF LIFE



TO EXPERIENCE EACH AND EVERY DAY WITH A PLEASANT MEMORY.

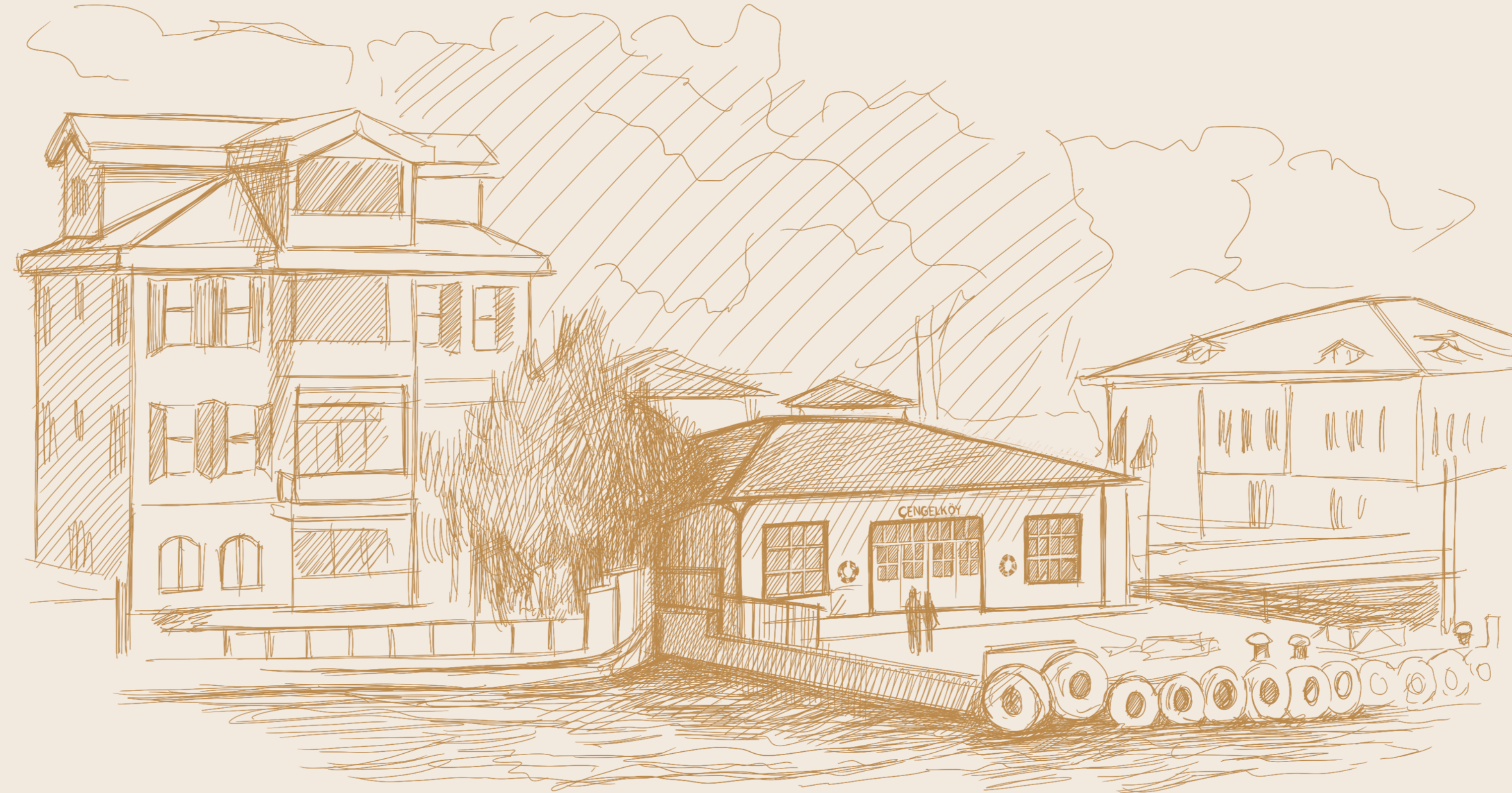
Nidapark Çengelköy

Considerate of the age-old history of Çengelköy, carrying trails of the antiquity, situated right where the past endures and the future blossoms and located at the very center of history, nature and the Bosphorus, Nidapark Çengelköy is the most vivid example of a culture of life sustained in spite of the time elapsed. You now have good reason to get lost in the depths of the 'once upon a time' in this sui generis Bosphorus village.





Living in the heart of history and the epicenter of life, in the most exclusive neighborhood of Istanbul.



Experience the privilege of being located at the center of Çengelköy, overlooking the Bosphorus and right in the middle of the two bridges, offering convenient commuting options everywhere. Arriving at your doorstep within minutes after crossing the bridge or taking a nostalgic ferry trip across the Bosphorus from the Çengelköy Pier are, both, part of day-to-daily life for the residents of Nidapark Çengelköy.

As Istanbul races against time, ever-seeking that which is new; there is a magical place in the Bosphorus, which has favored tranquility.



The project land is a cultural treasure with its relic buildings dating back to the 1840s and invaluable monumental trees. As these values were much appreciated at Nidapark Çengelköy, the design process was carried out with utmost precision to pay respect to the memories. Home to centennial trees, the green areas of Nidapark Çengelköy look forward to hosting you, their esteemed residents, for a pleasurable life.



*Seize the pleasure of
being close to everywhere,
while distant from
everything.*



Location and Transportation

You will experience the privilege of conveniently and quickly accessing every corner of Istanbul with the advantageous location of Nidapark Çengelköy.



ÇUBUKLU-İSTİNYE
VEHICLE FERRY PIER

20 mins



FATİH SULTAN MEHMET
BRIDGE

13 mins



SABIHA GÖKÇEN
AIRPORT

35 mins



ÇENGELKÖY
SQUARE

5 mins



15 JULY MARTYRS
BRIDGE

15 mins

TEM

E-5

ZİNCİRLİKUYU

ÜSKÜDAR
MARMARAY

İSTİNYE

ÇUBUKLU-İSTİNYE
FERRY

164TH YEAR POLICE
MEMORIAL FOREST

GÖZTEPE
RECREATION AREA

MİHRABAT GROVE

FATİH SULTAN MEHMET
BRIDGE

ANATOLIAN FORTRESS

KÜÇÜKSU
NATIONAL PARK

ADİLE SULTAN
PALACE

İSTANBUL
URBAN FOREST

OBSERVATORY

NIDAPARK
ÇENGELKÖY

VAHDETTİN
PRESIDENTIAL
PALACE

ÇENGELKÖY
FERRY PIER

ÇENGELKÖY
SQUARE

15 JULY
MARTYRS
BRIDGE

BEYLERBEYİ
PALACE

GRAND ÇAMLICA HILL

*Premium
quality
apartments,
meeting all
your needs.*

The Nidapark Çengelköy project was designed to offer its residents a spacious life, along with comfort and luxury.

The carefully devised architectural details, in each of the **207** apartments across the project consisting of **12** blocks, offer convenient amenities.



Nidapark Çengelköy consists of exclusively designed spacious and expansive living spaces:

- A wide range of apartment options from 2 to 3, 3,5, 4, 4,5 and 5,5 bedroom duplex
- Apartments with extensive garden use
- Apartments with penthouse terrace use
- Apartments with large balconies
- Limited number of apartments on each floor
- Spacious rooms, living rooms and master bedrooms
- Maid's rooms

All of these options have been combined in our project, in order to offer you the ideal life you seek.

*Are you ready to see off
the setting sun over the
Bosphorus and wake up to
the sound of seagulls?*





*Natural
landscape
areas with an
exquisite view
of the
Bosphorus.*



The low-story structures with horizontal architecture features were designed in line with the texture and landscape of Çengelköy. Nidapark Çengelköy is the creation of an approach that respects natural life and historical landmarks, preserves the appearance and contributes to its neighborhood with the privileges it offers.

*You will find serenity
beneath the centennial trees,
regreening with every spring.*



A heritage of Çengelköy's history, this precious area offers its residents a green and spacious life for a breath of fresh air, while the shades of the 300-year-old Calabrian Pine Tree at the center of the courtyard invites you on a journey across epic daydreams.



41°03'21.5"N 29°04'22.3"E

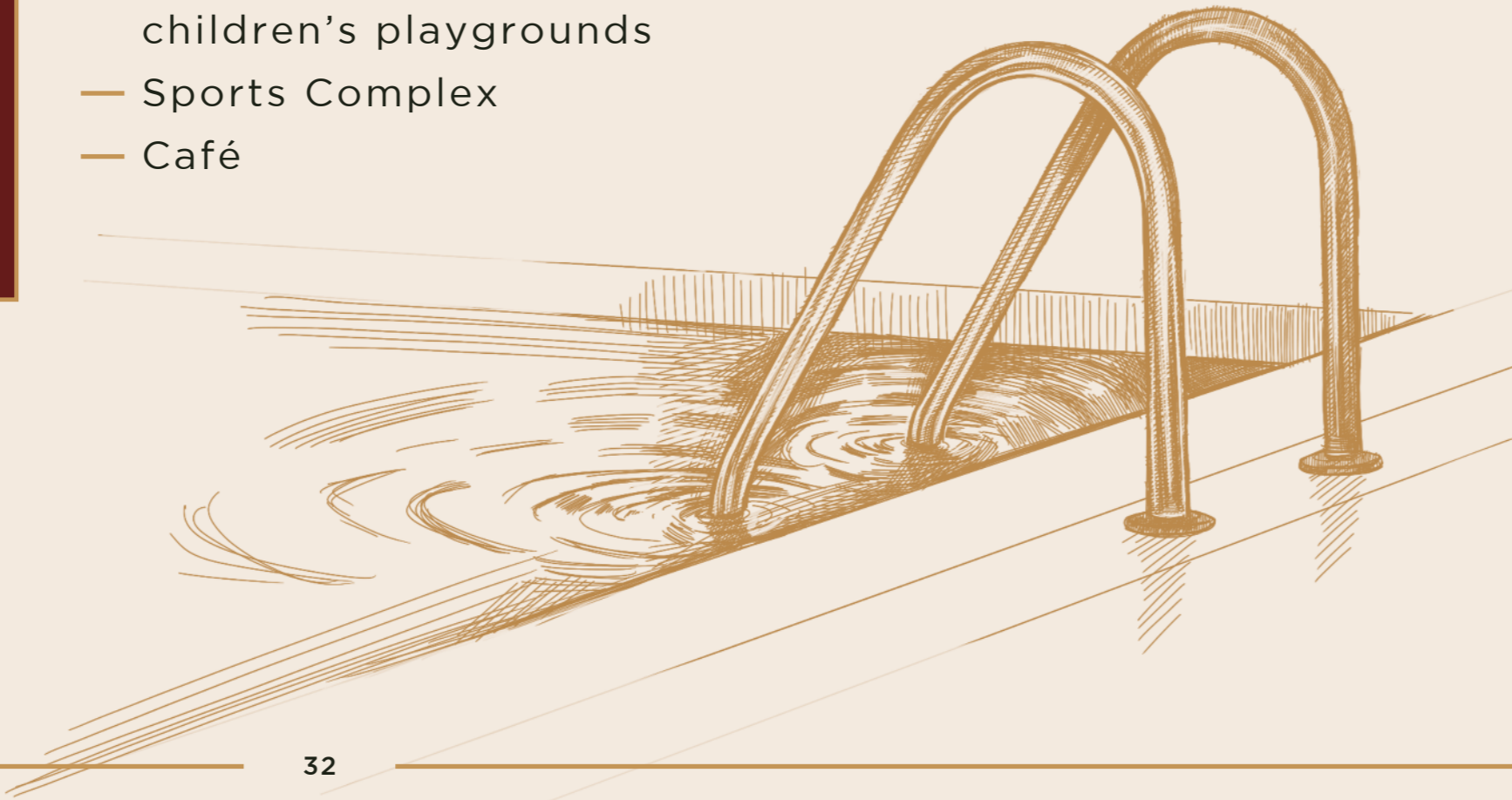
*Çengelköy is full of life,
neighborliness and
nature...*



Social facilities, which make the pleasurable life of your dreams possible.

Our social facilities are at your service, offering entertaining and safe activity possibilities to you and your loved ones.

- Walking trails
- Decorative pools and a waterfall
- Outdoor and indoor swimming pools
- Sunbathing deck
- Observation terraces
- Spacious and feature-rich children's playgrounds
- Sports Complex
- Café



Layout Plan

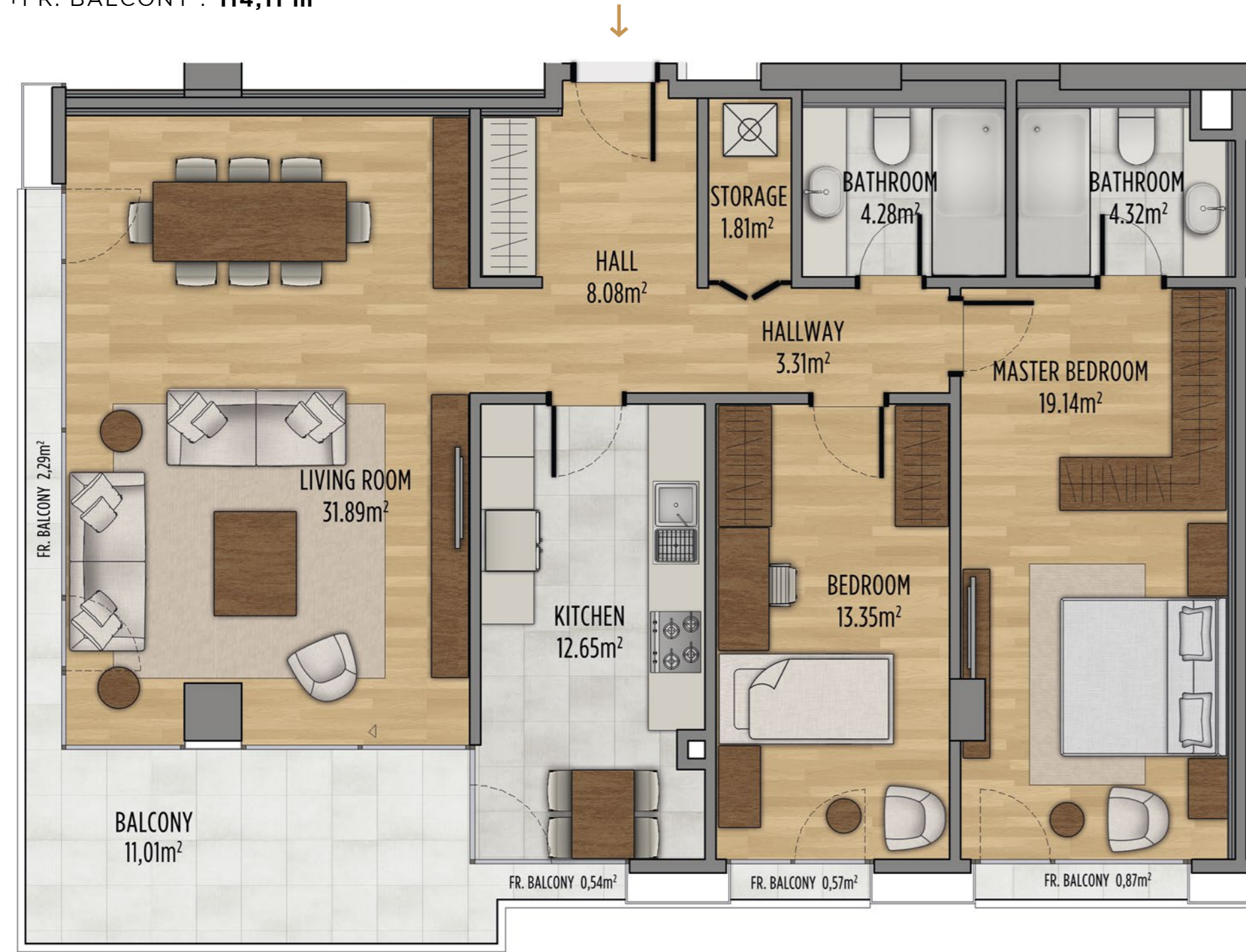


Apartment Plans



2 BEDROOM

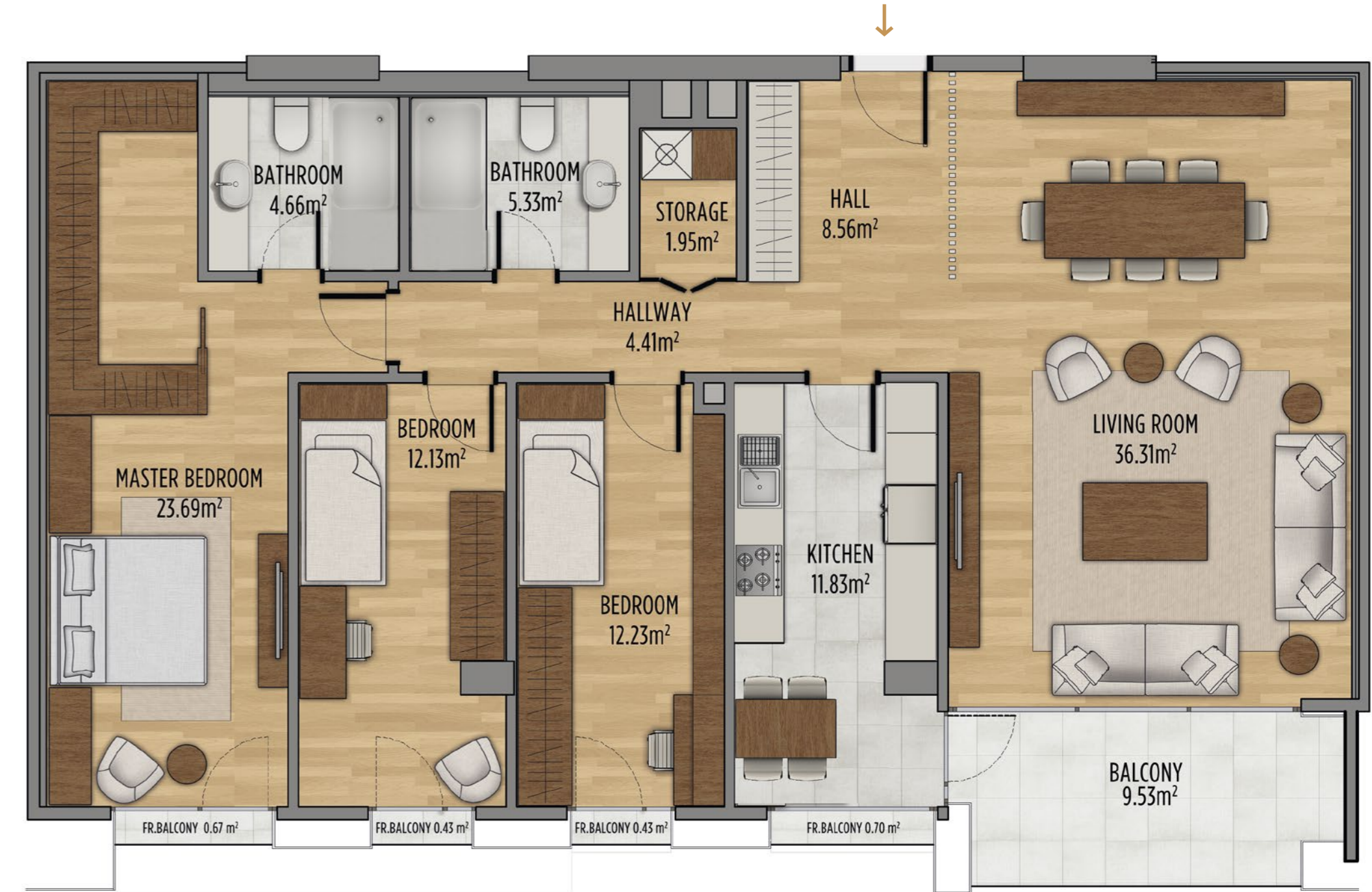
SALEABLE GROSS AREA : **155,59 m²**
 NET AREA : **98,83 m²**
 NET AREA+BALCONY+FR. BALCONY : **114,11 m²**



ONLY THE CABINETS SHOWN WITH THIS COLOR ARE TO BE DELIVERED.

TYPE A 3 BEDROOM

SALEABLE GROSS AREA : **176,21 m²**
 NET AREA : **121,09 m²**
 NET AREA+BALCONY+FR. BALCONY : **132,86 m²**



ONLY THE CABINETS SHOWN WITH THIS COLOR ARE TO BE DELIVERED.

3 BEDROOM

TYPE B

SALEABLE GROSS AREA : **189,00 m²**
 NET AREA : **129,66 m²**
 NET AREA+BALCONY+FR. BALCONY : **142,39 m²**

ONLY THE CABINETS SHOWN WITH THIS COLOR ARE TO BE DELIVERED.



3.5 BEDROOM

SALEABLE GROSS AREA : **196,87 m²**
 NET AREA : **130,56 m²**
 NET AREA+BALCONY+FR. BALCONY : **147,66 m²**

ONLY THE CABINETS SHOWN WITH THIS COLOR ARE TO BE DELIVERED.

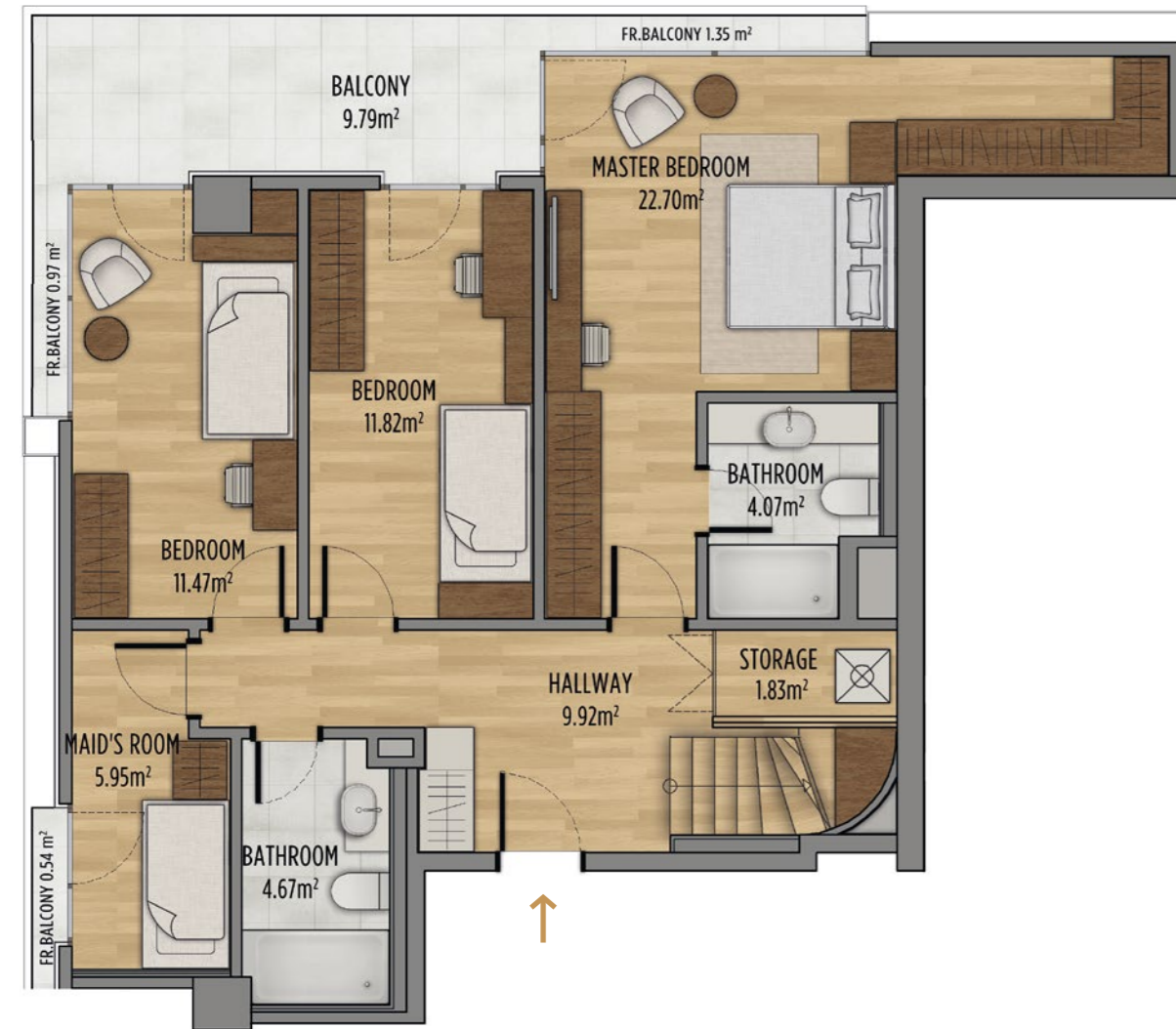


3.5 BEDROOM DUPLEX

SALEABLE GROSS AREA : **278,49 m²**

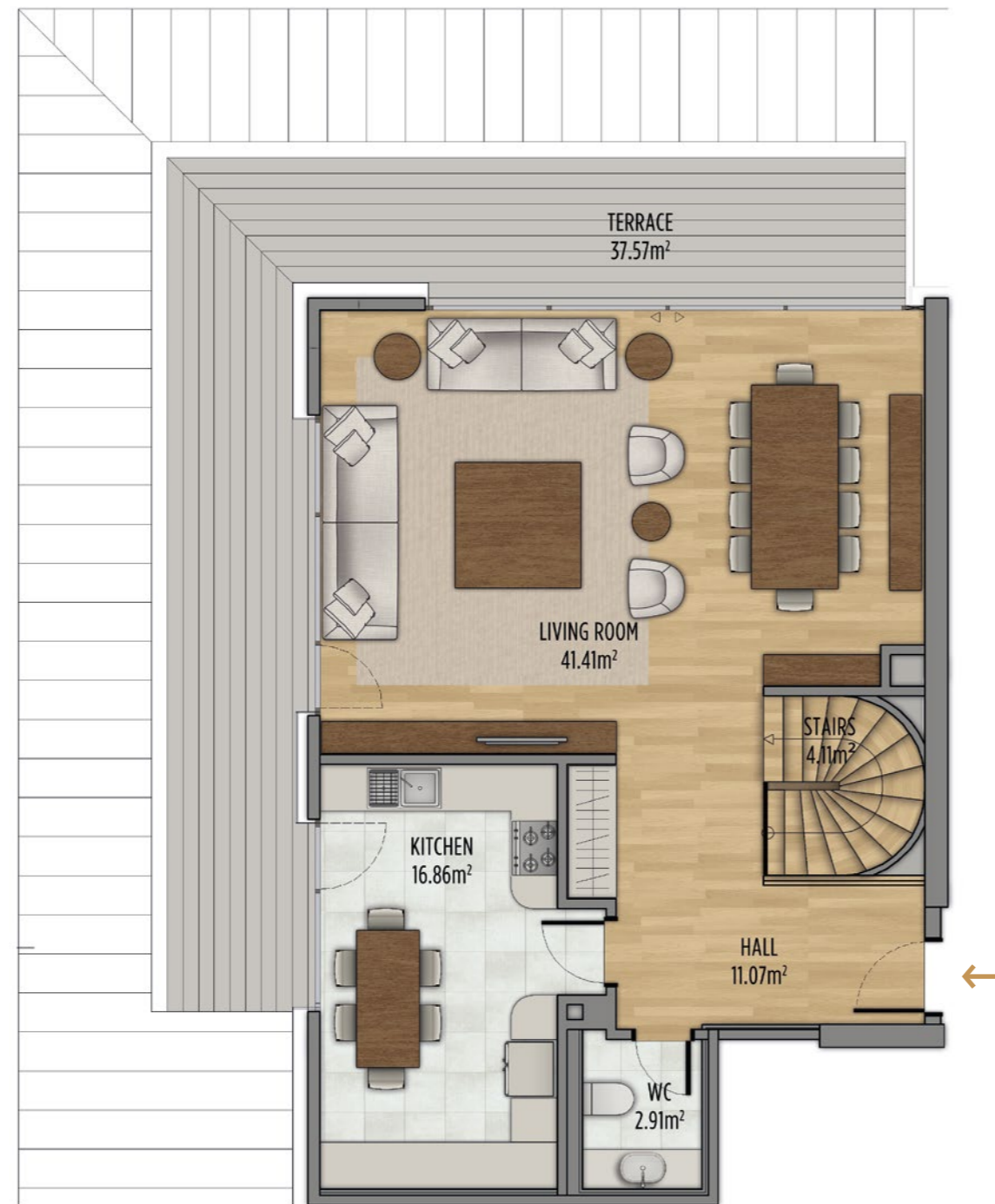
NET AREA : **148,79 m²**

NET AREA+BALCONY+FR. BALCONY : **199,01 m²**



DUPLEX GROUND FLOOR PLAN

ONLY THE CABINETS SHOWN WITH THIS COLOR ARE TO BE DELIVERED.



DUPLEX TOP FLOOR PLAN

ONLY THE CABINETS SHOWN WITH THIS COLOR ARE TO BE DELIVERED.

4 BEDROOM

SALEABLE GROSS AREA : **222,00 m²**

NET AREA : **143,26 m²**

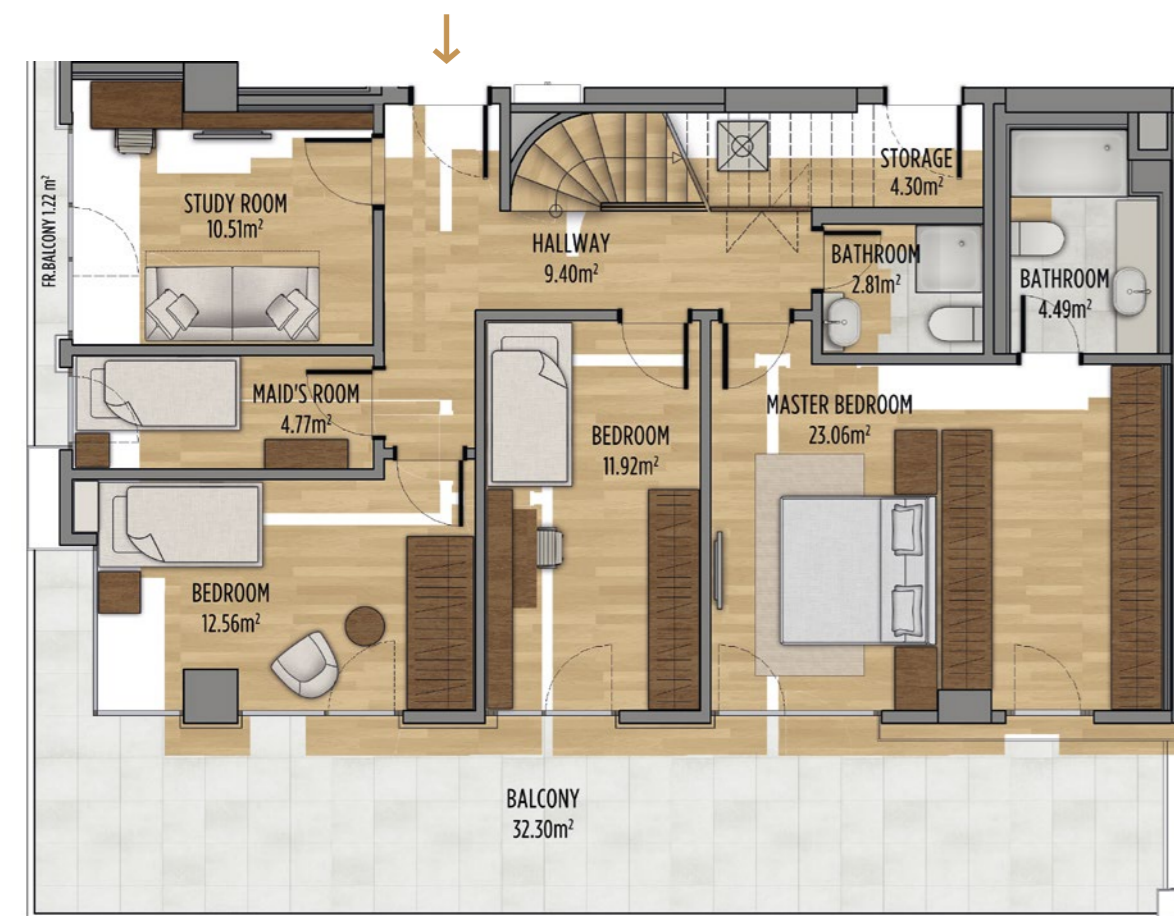
NET AREA+BALCONY+FR. BALCONY : **159,91 m²**



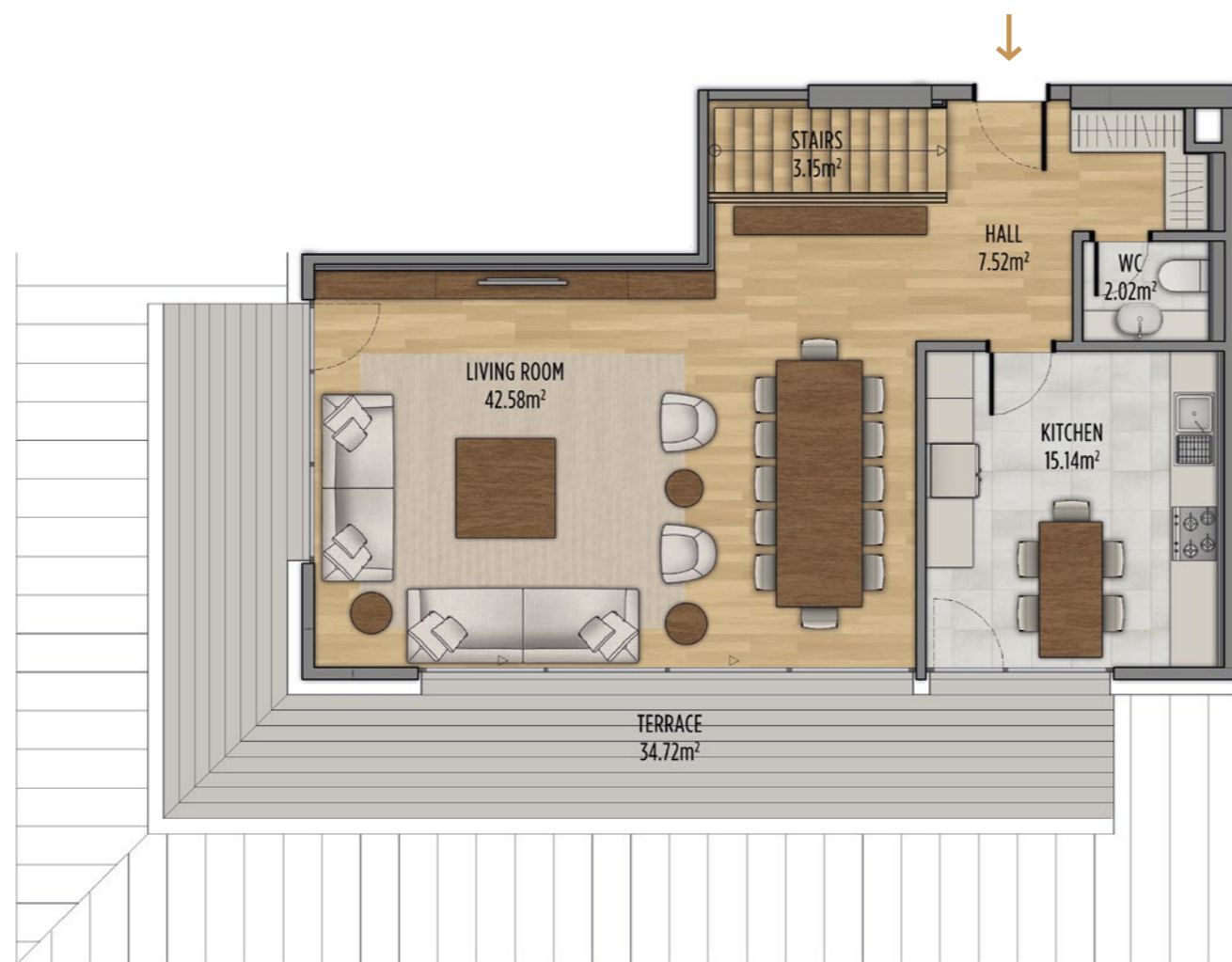
4.5 BEDROOM DUPLEX TYPE A

SALEABLE GROSS AREA : **291,28 m²**
 NET AREA : **149,93 m²**
 NET AREA+BALCONY+FR. BALCONY : **222,47 m²**

ONLY THE CABINETS SHOWN WITH THIS COLOR ARE TO BE DELIVERED.



DUPLEX GROUND FLOOR PLAN



DUPLEX TOP FLOOR PLAN

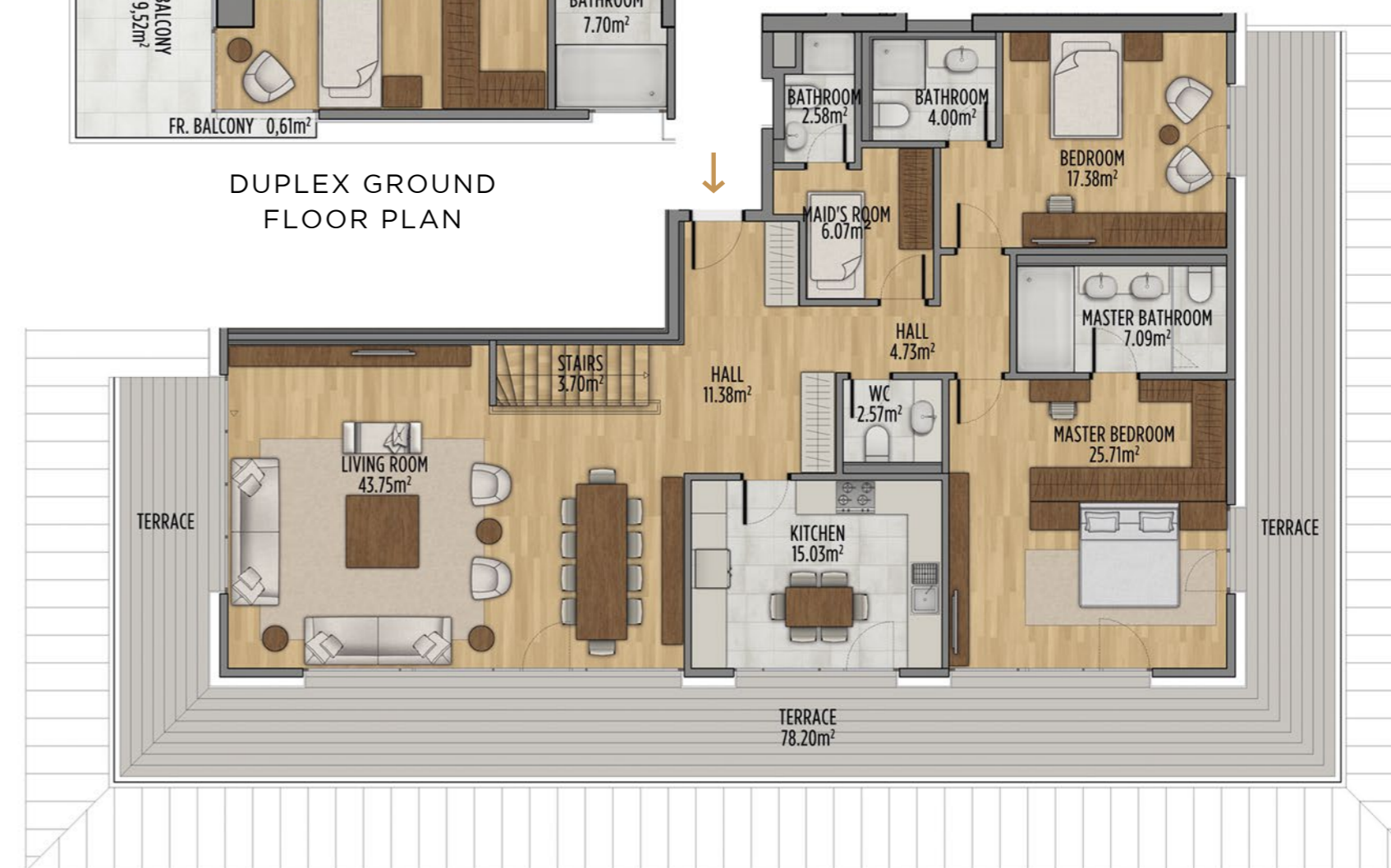
4.5 BEDROOM DUPLEX TYPE B

SALEABLE GROSS AREA : **403,62 m²**
 NET AREA : **197,41 m²**
 NET AREA+BALCONY+FR. BALCONY : **286,60 m²**

ONLY THE CABINETS SHOWN WITH THIS COLOR ARE TO BE DELIVERED.



DUPLEX GROUND FLOOR PLAN



DUPLEX TOP FLOOR PLAN

5.5 BEDROOM DUPLEX

SALEABLE GROSS AREA : **408.57 m²**

NET AREA : **227,33 m²**

NET AREA+BALCONY+FR. BALCONY : **325,11 m²**

N İ D A P A R K Ç E N G E L K Ö Y



DUPLEX GROUND FLOOR PLAN



DUPLEX TOP FLOOR PLAN

ONLY THE CABINETS SHOWN WITH THIS COLOR ARE TO BE DELIVERED.

WE ARE EXPECTING YOU AT **NİDAPARK ÇENGELKÖY** TO EXPERIENCE EACH AND EVERY DAY WITH A PLEASANT MEMORY.

WWW.NIDAPARKCENGELKOY.COM



PLEASE SCAN THE QR CODE FOR THE DIGITAL CATALOGUE.

www.nidaparkcengelkoy.com



444 4 846

NİDAPARK ÇENGELKÖY SATIŞ OFİSİ

Güzeltepe Mahallesi Pelin Sokak
Üsküdar / İstanbul